

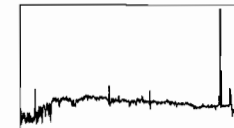
UT Date 2003-04-04 Observers M Calkins

Coll. Focus 810 Grating/Grism 600

File	Exp Time	UT Start	RA	Dec	Gr.	P.A.	Slit	Program	Bin	Comments
0001-0008.DARK	900	1:24	15:50:03	33:05:49	300	90	3.0	#57 Velocity S	2	
0009-0018.BIAS	0	1:43	15:50:03	33:05:49	300	90	3.0	#57 Velocity S	2	
0019-0028.FLAT	12	1:52	15:50:03	33:05:49	300	90	3.0	#57 Velocity S	2	
0029-0033.sky	2	2:08	15:50:03	33:05:49	300	90	3.0	#57 Velocity S	4	NO FLATS For BIN 314 sky
0034.COMP	5	2:09	15:50:03	33:05:49	300	90	3.0	#57 Velocity S	4	
0035.Hiltner600	70	2:27	06:42:37.2	02:11:25	300	90	3.0	#56 Spectropho	2	
0036.Hiltner600	70	2:29	06:42:37.2	02:11:25	300	90	3.0	#56 Spectropho	2	
0037.COMP	12	2:30	06:42:37.2	02:11:25	300	90	3.0	#56 Spectropho	2	
0038.HD52071	2	2:34	06:57:51	+27:13:42	300	90	3.0	#57 Velocity S	2	
0039.HD52071	2	2:34	06:57:51	+27:13:42	300	90	3.0	#57 Velocity S	2	
0040.COMP	12	2:35	06:57:51	+27:13:42	300	90	3.0	#57 Velocity S	2	
0041.2M05325752p1345092	1200	2:38	05:32:57.5	+13:45:09	300	90	3.0	#68 2MASS Reds	2	H alpha
0042.COMP	12	2:59	05:32:57.5	+13:45:09	300	90	3.0	#68 2MASS Reds	2	
0043.2M05344186p1317239	720	3:01	05:34:41.8	+13:17:23	300	90	3.0	#68 2MASS Reds	2	row=84
0044.COMP	12	3:14	05:34:41.8	+13:17:23	300	90	3.0	#68 2MASS Reds	2	
0045.2M05390599p0658250	600	3:16	05:39:05.9	+06:58:25	300	90	3.0	#68 2MASS Reds	2	
0046.COMP	12	3:26	05:39:05.9	+06:58:25	300	90	3.0	#68 2MASS Reds	2	
0047.COMP	35	3:35	11:03:00.5	+31:58:16	600	7	2.0	#88 Mass Funct	2	600L, 2arcsec, tilt=494
0048.MF0001	1200	3:36	11:03:00.5	+31:58:16	600	7	2.0	#88 Mass Funct	2	
0049.MF0001	1200	3:56	11:03:00.5	+31:58:16	600	7	2.0	#88 Mass Funct	2	

29-33 - NOT reduced - NO FLATS

DARKS AT BEGINNING + ENDING OF NIGHT HAVE VERY DIFF MEANJ
 ~20 for beginning of night, ~2 for end of night - structure at
 blue end.

UT Date 2003-04-04 Observers M CalkinsColl. Focus 810 Grating/Grism 600

File	Exp Time	UT Start	RA	Dec	Gr.	P.A.	Slit	Program	Bin	Comments
0050.MF0001	1200	4:16	11:03:00.5	+31:58:16	600	7	2.0	#88 Mass Funct	2	
0051.COMP	35	4:37	11:03:00.5	+31:58:16	600	7	2.0	#88 Mass Funct	2	
0052.Feige34	120	4:40	10:36:41.2	43:21:50	600	35	2.0	#56 Spectropho	2	
0053.COMP	35	4:42	10:36:41.2	43:21:50	600	35	2.0	#56 Spectropho	2	
0054.HD100006	51	4:45	11:30:29.0	18:24:35	600	90	2.0	#88f Mass Func	2	
0055.COMP	35	4:46	11:30:29.0	18:24:35	600	90	2.0	#88f Mass Func	2	
0056.HD100006	54	4:47	11:30:29.0	18:24:35	600	90	2.0	#88f Mass Func	2	
0057.COMP	35	4:49	11:30:29.0	18:24:35	600	90	2.0	#88f Mass Func	2	
0058.NGC4278	180	4:51	12:17:36.1	29:33:29	600	103	2.0	#88f Mass Func	2	
0059.NGC4278	180	4:54	12:17:36.1	29:33:29	600	103	2.0	#88f Mass Func	2	
0060.NGC4278	180	4:58	12:17:36.1	29:33:29	600	103	2.0	#88f Mass Func	2	
0061.COMP	35	5:01	12:17:36.1	29:33:29	600	103	2.0	#88f Mass Func	2	
0062.COMP	35	5:06	10:49:10.0	+29:48:57	600	10	2.0	#88 Mass Funct	2	
0063.MF7123	600	5:07	10:49:10.0	+29:48:57	600	10	2.0	#88 Mass Funct	2	
0064.MF7123	600	5:17	10:49:10.0	+29:48:57	600	10	2.0	#88 Mass Funct	2	
0065.MF7123	600	5:28	10:49:10.0	+29:48:57	600	10	2.0	#88 Mass Funct	2	
0066.COMP	35	5:39	10:49:10.0	+29:48:57	600	10	2.0	#88 Mass Funct	2	
0067.MF7027	450	5:43	10:00:57.2	+03:08:30	600	-20	2.0	#88 Mass Funct	2	
0068.MF7027	450	5:50	10:00:57.2	+03:08:30	600	-20	2.0	#88 Mass Funct	2	
0069.COMP	35	5:59	10:00:57.2	+03:08:30	600	-20	2.0	#88 Mass Funct	2	

UT Date 2003-04-04 Observers M CalkinsColl. Focus 810 Grating/Grism 600

File	Exp Time	UT Start	RA	Dec	Gr.	P.A.	Slit	Program	Bin	Comments
0070.MF7139	450	6:03	10:25:46.3	+13:43:0	600	-50	2.0	#88 Mass Funct	2	
0071.MF7139	450	6:11	10:25:46.3	+13:43:0	600	-50	2.0	#88 Mass Funct	2	
0072.COMP	35	6:19	10:25:46.3	+13:43:0	600	-50	2.0	#88 Mass Funct	2	
0073.MF4063	450	6:24	12:04:51.1	+63:07:53	600	75	2.0	#88 Mass Funct	2	
0074.MF4063	450	6:31	12:04:51.1	+63:07:53	600	75	2.0	#88 Mass Funct	2	
0075.COMP	35	6:40	12:04:51.1	+63:07:53	600	75	2.0	#88 Mass Funct	2	
0076.MF7073	450	6:45	10:12:11.7	+04:55:24	600	-5	2.0	#88 Mass Funct	2	
0077.MF7073	450	6:52	10:12:11.7	+04:55:24	600	-5	2.0	#88 Mass Funct	2	
0078.COMP	35	7:00	10:12:11.7	+04:55:24	600	-5	2.0	#88 Mass Funct	2	
0079.MF4039	450	7:06	11:05:04.6	+35:21:56	600	15	2.0	#88 Mass Funct	2	clouds, get again....
0080.MF4039	450	7:13	11:05:04.6	+35:21:56	600	15	2.0	#88 Mass Funct	2	
0081.MF4039	450	7:21	11:05:04.6	+35:21:56	600	15	2.0	#88 Mass Funct	2	
0082.MF4039	450	7:29	11:05:04.6	+35:21:56	600	15	2.0	#88 Mass Funct	2	
0083.COMP	35	7:37	11:05:04.6	+35:21:56	600	15	2.0	#88 Mass Funct	2	
0084.HD114093	49	7:40	13:08:02.4	24:49:52	600	90	2.0	#88f Mass Func	2	
0085.COMP	35	7:42	13:08:02.4	24:49:52	600	90	2.0	#88f Mass Func	2	
0086.NGC4621	180	7:45	12:39:31.2	11:55:15	600	16	2.0	#88f Mass Func	2	
0087.NGC4621	180	7:48	12:39:31.2	11:55:15	600	16	2.0	#88f Mass Func	2	
0088.NGC4621	180	7:51	12:39:31.2	11:55:15	600	16	2.0	#88f Mass Func	2	
0089.COMP	35	7:55	12:39:31.2	11:55:15	600	16	2.0	#88f Mass Func	2	

UT Date 2003-04-04 Observers M CalkinsColl. Focus 810 Grating/Grism 600

File	Exp Time	UT Start	RA	Dec	Gr.	P.A.	Slit	Program	Bin	Comments
0090.COMP	35	8:02	12:01:41.0	+04:46:11	600	-40	2.0	#88 Mass Funct	2	
0091.MF7076	450	8:03	12:01:41.0	+04:46:11	600	-40	2.0	#88 Mass Funct	2	pesky clouds...
0092.MF7076	450	8:10	12:01:41.0	+04:46:11	600	-40	2.0	#88 Mass Funct	2	
0093.MF7076	450	8:18	12:01:41.0	+04:46:11	600	-40	2.0	#88 Mass Funct	2	
0094.MF7076	450	8:26	12:01:41.0	+04:46:11	600	-40	2.0	#88 Mass Funct	2	
0095.MF7076	450	8:34	12:01:41.0	+04:46:11	600	-40	2.0	#88 Mass Funct	2	
0096.COMP	35	8:42	12:01:41.0	+04:46:11	600	-40	2.0	#88 Mass Funct	2	
0097.COMP	35	8:45	12:56:44.0	+30:43:8	600	-15	2.0	#88 Mass Funct	2	
0098.MF0035	900	8:46	12:56:44.0	+30:43:8	600	-15	2.0	#88 Mass Funct	2	
0099.MF0035	900	9:01	12:56:44.0	+30:43:8	600	-15	2.0	#88 Mass Funct	2	
0100.MF0035	900	9:17	12:56:44.0	+30:43:8	600	-15	2.0	#88 Mass Funct	2	
0101.COMP	35	9:32	12:56:44.0	+30:43:8	600	-15	2.0	#88 Mass Funct	2	
0102.COMP	35	9:37	13:58:42.2	+13:27:22	600	-40	2.0	#88 Mass Funct	2	
0103.MF7074	900	9:38	13:58:42.2	+13:27:22	600	-40	2.0	#88 Mass Funct	2	
0104.MF7074	900	9:53	13:58:42.2	+13:27:22	600	-40	2.0	#88 Mass Funct	2	
0105.MF7074	900	10:08	13:58:42.2	+13:27:22	600	-40	2.0	#88 Mass Funct	2	
0106.COMP	35	10:24	13:58:42.2	+13:27:22	600	-40	2.0	#88 Mass Funct	2	
0107.HD140716	55	10:27	15:43:59.3	32:30:56	600	90	2.0	#88f Mass Func	2	
0108.COMP	35	10:29	15:43:59.3	32:30:56	600	90	2.0	#88f Mass Func	2	
0109.BDp332642	180	10:32	15:50:03	33:05:49	600	-31	2.0	#56 Spectropho	2	

UT Date 2003-04-04 Observers M CalkinsColl. Focus 810 Grating/Grism 600

File	Exp Time	UT Start	RA	Dec	Gr.	P.A.	Slit	Program	Bin	Comments
0110.COMP	35	10:35	15:50:03	33:05:49	600	-31	2.0	#56 Spectropho	2	
0111.NGC4839	180	10:40	12:54:59.0	27:46:00	600	79	2.0	#88f Mass Func	2	bad standard
0112.NGC4839	180	10:43	12:54:59.0	27:46:00	600	79	2.0	#88f Mass Func	2	
0113.NGC4839	180	10:46	12:54:59.0	27:46:00	600	79	2.0	#88f Mass Func	2	
0114.COMP	35	10:50	12:54:59.0	27:46:00	600	79	2.0	#88f Mass Func	2	
0115.NGC5846	240	10:53	15:03:56.9	01:47:53	600	27	2.0	#88f Mass Func	2	
0116.NGC5846	240	10:57	15:03:56.9	01:47:53	600	27	2.0	#88f Mass Func	2	
0117.NGC5846	240	11:01	15:03:56.9	01:47:53	600	27	2.0	#88f Mass Func	2	
0118.COMP	35	11:06	15:03:56.9	01:47:53	600	27	2.0	#88f Mass Func	2	
0119.COMP	35	11:10	14:33:58.0	+03:44:47	600	-50	2.0	#88 Mass Funct	2	
0120.MF7020	900	11:12	14:33:58.0	+03:44:47	600	-50	2.0	#88 Mass Funct	2	
0121.MF7020	900	11:27	14:33:58.0	+03:44:47	600	-50	2.0	#88 Mass Funct	2	
0122.MF7020	900	11:42	14:33:58.0	+03:44:47	600	-50	2.0	#88 Mass Funct	2	
0123.COMP	35	11:58	14:33:58.0	+03:44:47	600	-50	2.0	#88 Mass Funct	2	
0124.N5866	180	12:07	15:05:07.2	+55:57:18	600	-50	2.0	#57 Velocity S	2	
0125.N5866	180	12:10	15:05:07.2	+55:57:18	600	-50	2.0	#57 Velocity S	2	
0126.N5866	180	12:13	15:05:07.2	+55:57:18	600	-50	2.0	#57 Velocity S	2	
0127.COMP	35	12:17	15:05:07.2	+55:57:18	600	-50	2.0	#57 Velocity S	2	
0128.PG1708p602	300	12:21	17:08:35.9	60:13:52	600	-16	2.0	#56 Spectropho	2	
0129.COMP	35	12:27	17:08:35.9	60:13:52	600	-16	2.0	#56 Spectropho	2	

UT Date 2003-04-04 Observed CalkinsColl. Focus 810 Grating/Grism 600

<i>File</i>	<i>Exp^r Timert</i>	<i>RA</i>	<i>Dec</i>	<i>Gr.</i>	<i>P.A.</i>	<i>Slit</i>	<i>Program</i>	<i>Bin</i>	<i>Comments</i>
0130.HD166842	629	18:11:32.0	25:33:40	600	90	2.0	#88f Mass Func	2	
0131.COMP	351	18:11:32.0	25:33:40	600	90	2.0	#88f Mass Func	2	
0132-0136.sky	23	18:11:32.0	25:33:40	600	90	2.0	#57 Velocity S	2	
0137.COMP	353	18:11:32.0	25:33:40	600	90	2.0	#57 Velocity S	2	
0138-0147.BIAS	07	18:11:32.0	25:33:40	600	90	2.0	#57 Velocity S	2	
0148-0157.FLAT	406	18:11:32.0	25:33:40	600	90	2.0	#57 Velocity S	2	
0158-0167.DARK	9034	18:11:32.0	25:33:40	600	90	2.0	#57 Velocity S	2	